

# Volicon Input switch

## User Guide

V7.2

Volicon

14/01/2014

<u>Author</u>	<u>Revision</u>	<u>Reviewed by</u>	<u>Date</u>
<i>Amit Kleinman</i>	<i>1.0</i>		<i>14/01/2013</i>

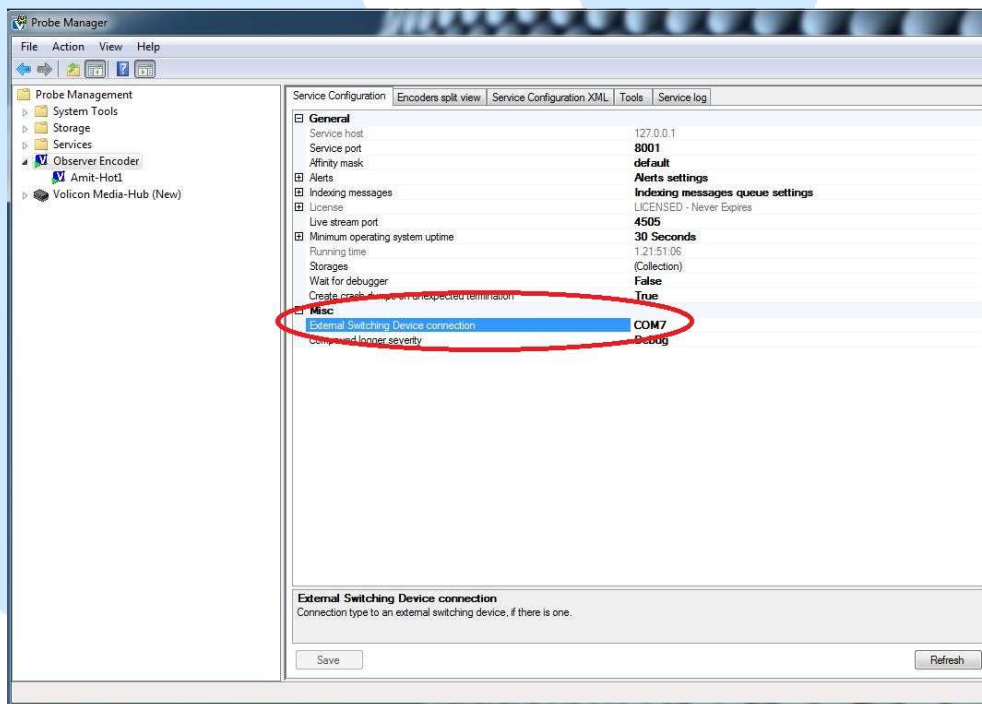
## Introduction:

Volicon Input Switch was developed in order to connect several inputs to one encoder using the KRAMER device. First input will be the default input and all other inputs can be seen only by using manual mode.

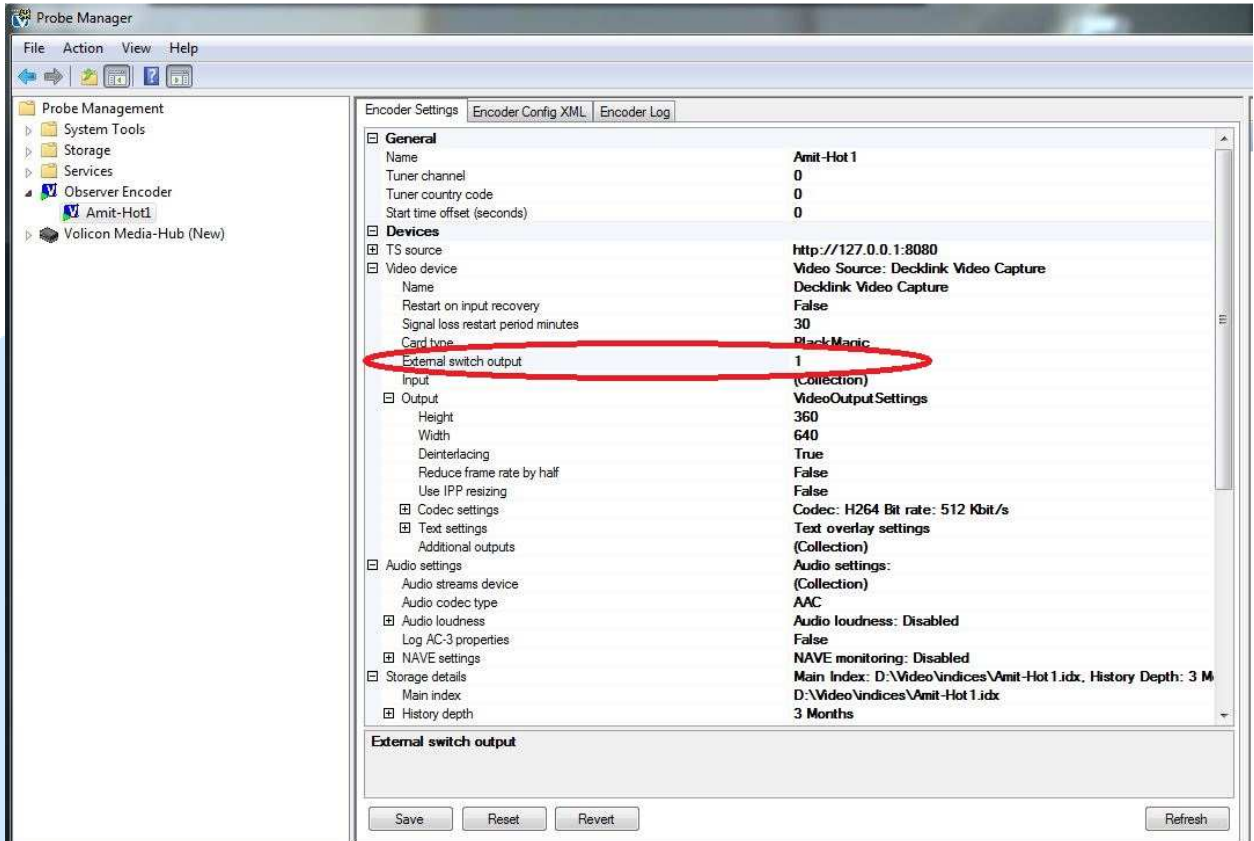
## Settings:

### Probe manager settings:

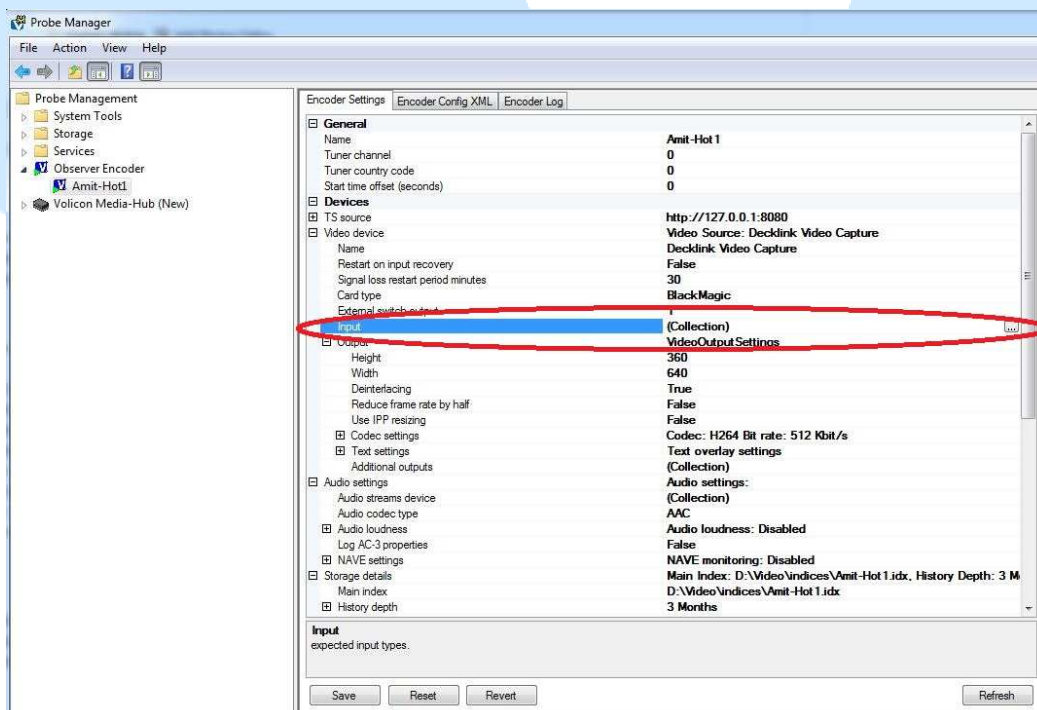
1. Set KRAMER device in probe manager – Need to add com port number to “External switching device connection” field under probe manager-> observer encoder service.



## 2. Define external switch output – Defines number of output pin of KRAMER device.



## 3. Add inputs to encoder – 3.1. Open input collection –



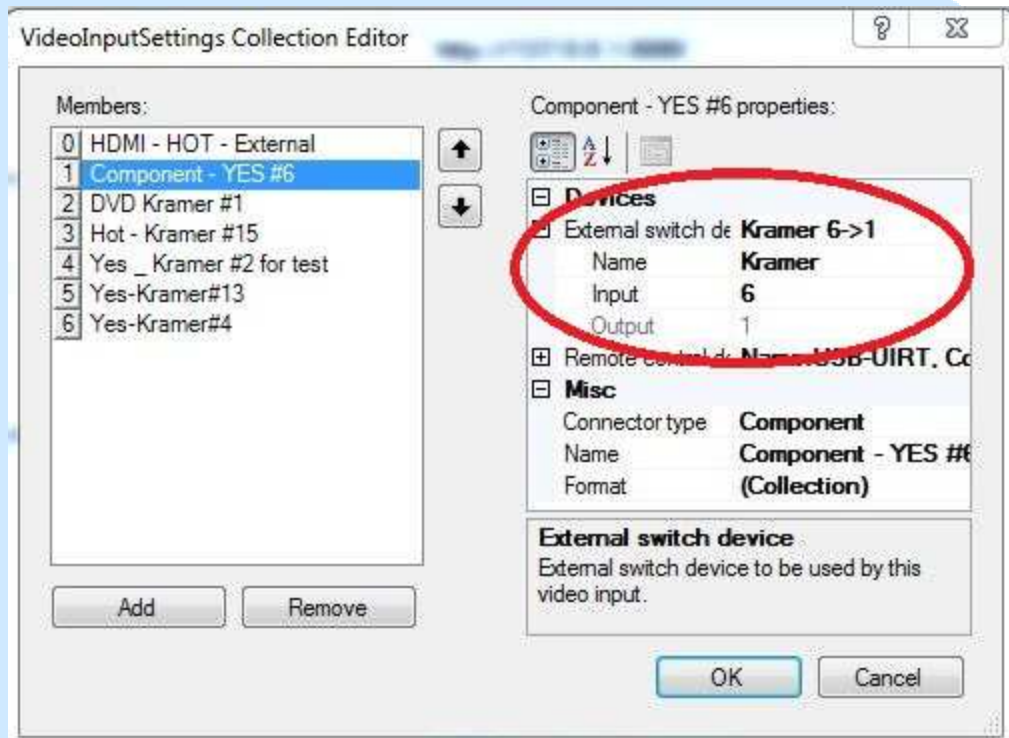
3.2. Add input – Need to define the following parameters:

External switch device:

**Name** – Kramer

**Input** – input # on KRAMER device (in the example below the following input is connected to input #6 on KRAMER)

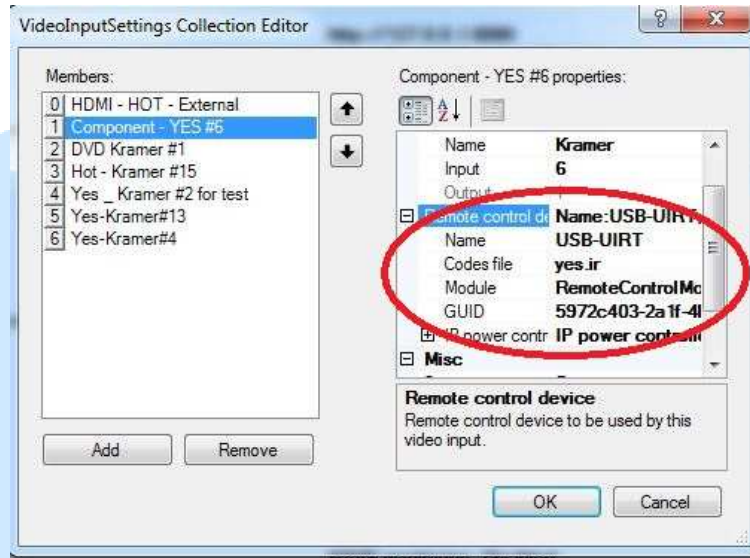
**Output** – Should be filled automatically, inherits from external switch output value in step 2.



### Remote control device:

Need to define Name and codes file.

Note that if one of the inputs has remote control device defined all inputs must have remote control device (2 inputs can have same IR device).

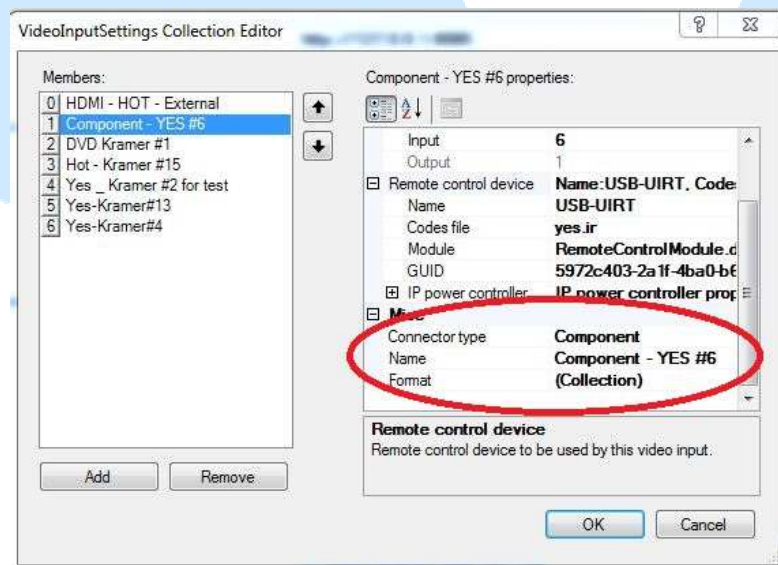


### Misc. settings:

**Connector type** – Type of connection.

**Name** – Input's name – This name will be shown on input switch drop down options and on input's metadata.

**Format** – video format.



## Front end Settings:

- Inputs will also be shown under edit encoder page.

### Video Inputs

Id	Name	Stb	Ir File
1	HDMI - HOT - External	HOT	HOT.ir
2	Component - YES #6	YES	yes.ir
3	DVD Kramer #1	HOT	HOT.ir
4	Hot - Kramer #15	HOT	HOT.ir
5	Yes_ Kramer #2 for tes	YES	yes.ir
6	Yes-Kramer#13	YES	yes.ir
7	Yes-Kramer#4	YES	yes.ir

- Inputs order can be changed by drag & drop of input ID. After saving the changes, the 1<sup>st</sup> input will be the default input.

### Video Inputs

Id	Name	Stb	Ir File
1	Component - YES #6	YES	yes.ir
2	DVD Kramer #1	HOT	HOT.ir
3	Hot - Kramer #15	HOT	HOT.ir
4	Yes_ Kramer #2 for tes	YES	yes.ir
5	HDMI - HOT - External	HOT	HOT.ir
6	Yes-Kramer#13	YES	yes.ir
7	Yes-Kramer#4	YES	yes.ir

- STB must be defined for each input, IR file will inherits the appropriate IR from the STB's configuration.

- When changing STB for any input, the new IR file will be presented next to the old one until saving changes.

**Edit Encoder**

TS Program:   
Resolution:  Bitrate:

Sub Encoders

Video Inputs

Id	Name	Stb	Ir File
1	HDMI - HOT - External	YES	HOT.ir yes.ir
2	Component - YES #6	YES	yes.ir
3	DVD Kramer #1	HOT	HOT.ir
4	Hot - Kramer #15	HOT	HOT.ir
5	Yes _ Kramer #2 for tes	YES	yes.ir
6	Yes-Kramer#13	YES	yes.ir
7	Yes-Kramer#4	YES	yes.ir

- Configuration STB will be the same as 1<sup>st</sup> input and it can't be edited.

**Edit Encoder**

Video Inputs

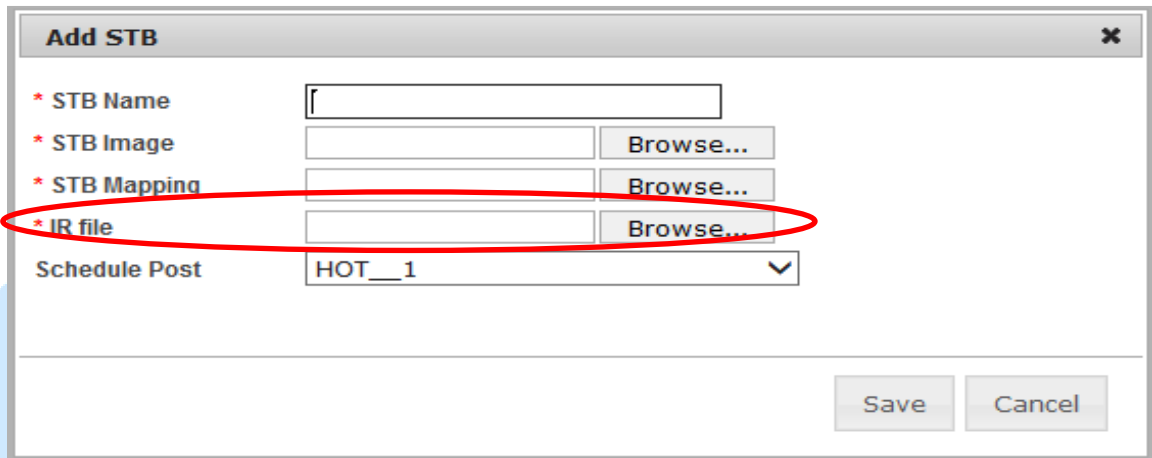
Id	Name	Stb	Ir File
1	HDMI - HOT - External	HOT	HOT.ir
2	Component - YES #6	YES	yes.ir
3	DVD Kramer #1	HOT	HOT.ir
4	Hot - Kramer #15	HOT	HOT.ir
5	Yes _ Kramer #2 for tes	YES	yes.ir
6	Yes-Kramer#13	YES	yes.ir
7	Yes-Kramer#4	YES	yes.ir

Configuration

STB: HOT  
Primary Lineup: None  
Reviewer: None

Bouquets: com  
Secondary Lineup: None

- New field is added to STB definition under Central Config->STB: IR file. This will connect STB to IR image, mapping and code file (must be defined).



**Add STB**

\* STB Name

\* STB Image  Browse...

\* STB Mapping  Browse...

\* IR file  Browse...

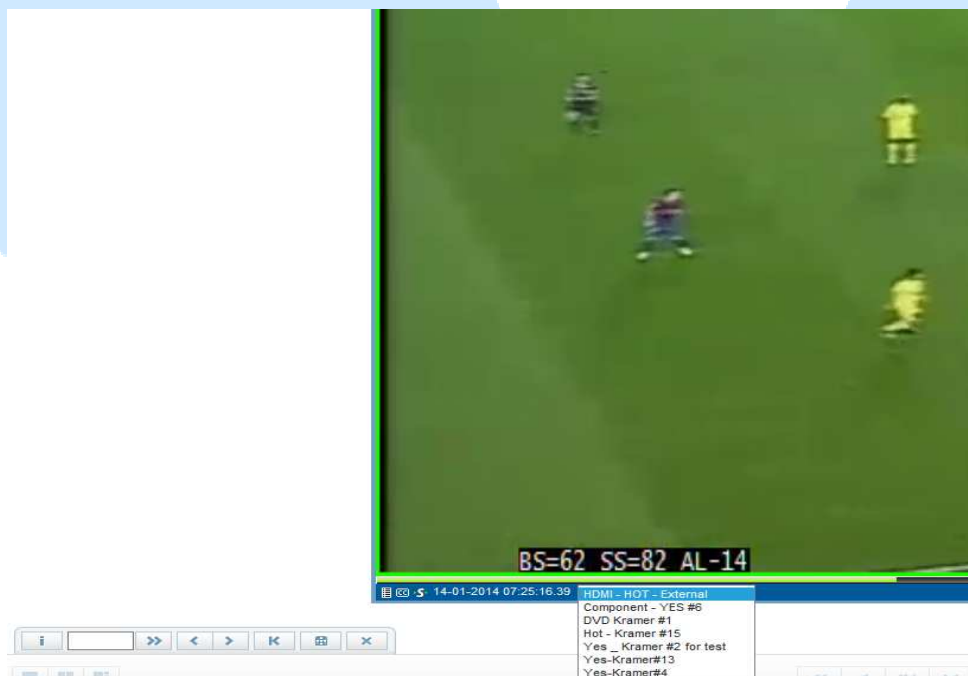
Schedule Post  ▾

Save Cancel

### Switching input:

### Internet explorer:

- When opening manual mode on player with several inputs, additional drop down box will appear, this drop down list will include all inputs options and by clicking any input player should change input.



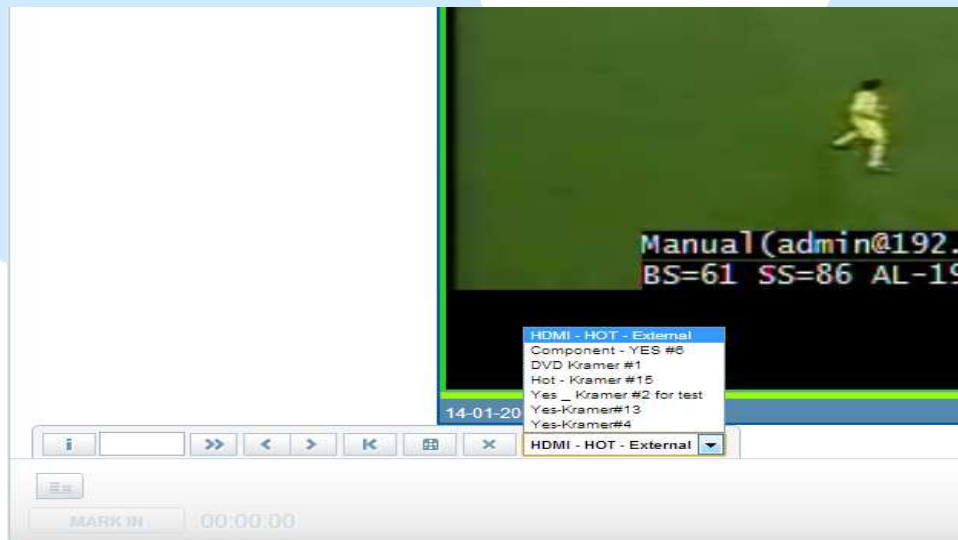


- User can show Input's metadata on player using right click on player->Display metadata->Input



### Clientless Browsers (Chrome, Firefox and Safari):

- On these browsers, after opening manual mode the Input Switch drop down list is located inside the manual mode (and not on player-stream bar like in IE).



**General behavior notes:**

- Opening remote control pop up should show the correct remote according to input's STB configuration
- In case remote control timeout event occurs input will return to 1<sup>st</sup> default input.
- Lineup/Reviewer can be done only on 1<sup>st</sup> input.

